



DOCUMENTATION

SHANSHIN MIDDLE EAST BUSINESS SOLUTION

Copy Right Shanshin Softech



What if you never had to worry about running out of computing resources again?

What if you could accomplish this without being forced to completely change your business model?

Now, thanks to Shanshin ERP, you can quickly grow the business while, at the same time, eliminating the need to hire additional employees and completely changing the way you do the business with your customers today.

SMEBS

Shanshin ERP (SMEBS) Platform That Not Only Understands the Business Requirements of your company, But Also the Business Requirements of your Customers

Imagine a world where you no longer need to worry about how to manage your Business Software Solutions and underlying complexities of scaling physical hardware and other related software and securities

How SMEBS Works:

SMEBS is a revolutionary Enterprise Resources and Planning solution with IaaS and SaaS platform designed for and sold exclusively to Business Establishments which recognizes the differences. It is specifically for those who recognize the benefits and efficiencies that come with SMEBS enabling their offerings but do not want to spend the large amounts of capital that is required to setup their own costly Infrastructures and buy costly ERP solution

Don't Change The Way You Manage Your Business Today:

One of the many issues surrounding the implementation of ERP solutions provided by major ERP providers today is that you need to completely change your current business model and confuse your employees and customers by changing the way that you charge for services. In the case of SMEBS, this is completely untrue. In fact, we encourage you to continue doing business as you do today. The only difference being that, thanks to SMEBS, you are now able to increase your bottom line by eliminating much of the everyday expenses and time consuming manual tasks associated with managing separate physical IT infrastructures and Software solutions.

Work Smarter, Not Harder

With SMEBS you are able to manage and administer your IT infrastructure the same way you do today. Only, now you can do it much more efficiently and in a fraction of the time. Say goodbye to the days of constantly traveling to your branches and customer's locations for every little problem that comes to the surface. Instead, manage your branches's entire infrastructure from one unified management console





TBI, National Institute of Technology Calicut

NIT Campus P. O, Calicut, Kerala-673601, INDIA

Phone: +91 495 2520894, 2286162. Fax: +91 495 2286162

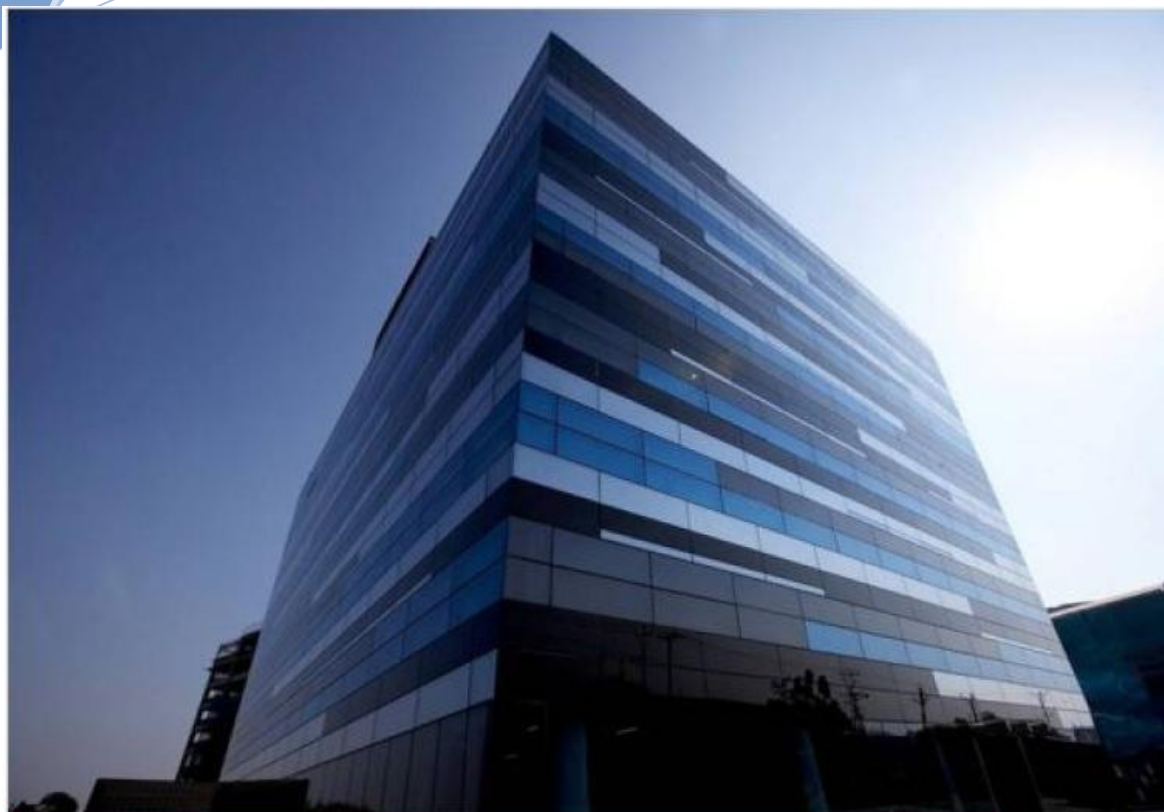
Mobile: +91 9846763389

Email : admin@shanshin.com, info@shanshin.com

<http://www.shanshin.com>

Business Software Solutions Applications and Services





CtrlS



CtrlS



Reaching the Next Level
in Data Management



About Shanshin Softech

Shanshin Softech is an IT industry established within the physical infrastructure of National Institute of Technology Calicut, INDIA registered under Department of Industries, Govt. of Kerala with the support and guidance of National Institute of Technology Calicut and Indian Institute of Management Kozhikode. We provide Business Software Solutions Applications and Services, Infrastructure Services, Dedicated Servers, Managed Services, Disaster Recovery and Business Continuity Planning Services

TBI-NITC, sponsored by National Science and Technology Entrepreneurship Development Board (NSTEDB), Department of Science & Technology, Govt. of India, take care of the development of the industry and provides specialized guidance, critical support, innovative financing, feasibility study, project appraisal, market research, economic study, training employees to improve their technical and management skills.

Shanshin Softech is the Business Partner (CBP) of **CtrlS** (India's first Tier IV Datacenter. Headquartered at Hyderabad, India and Promoted by the Pioneer Group and US\$20 billion NYSE-listed Och-Ziff Capital)

We have a strong background in developing and implementing business software across the globe. We take pride in providing a wide range of solutions and services catering to Small, Mid-sized and Large Enterprises across diverse industry sectors.

Our Vision

Aiming to become a world class standard IT industry in the Republic of India, Shanshin Softech target in utilizing the intellectual talents of the republic by providing job opportunities to the students from NITs and other professional institutions of the Republic having technical and managerial skills and provide environment to develop high quality technical experience and skills

<http://www.shanshin.com>

<http://www.shanshin.com/connect>

Our Services and Products

1. **Custom Software Development:** We undertake software development project for multinational companies and for SMEs. As a dedicated Custom Software development solutions provider, we try hard to deliver superior quality and cost effective Business solutions to our clients by following customized processes to deliver on-time and quality outputs. Since custom software is developed for a single customer it can accommodate that customer's particular preferences and expectations. Custom software may be designed in stage by stage processes, allowing all nuances and possible hidden dangers to be taken into account.
2. **Enterprise Resource Planning (ERP Software) SMEBS:** Our enterprise resource planning (ERP) system that integrates and automate many of the business practices associated with the operations or production aspects of a company, serving both the domestic and international sectors to help the companies of any size for achieving their defined business goals effectively. A significant part of our services portfolio is our customized ERP solutions in cloud platform.

Shanshin Softech is mainly focused in providing Enterprise Resource Planning and solutions for enterprises across the globe. With its well experienced team in Enterprise Resource Planning and solutions, Shanshin provides consultancy, development, customization, training, support and maintenance to partners and customers in almost 10 countries so far. It has live experiences in delivering customized ERP solutions based on the fastest developing online ERP application. We have got a fully fledged technical team working in an hierarchical model with Project managers, Team leaders, Senior Software Engineers and Software Engineers. They also undertake training for end users and works on pre-sales activities. We have a dedicated network team to deploy and monitor servers remotely and onsite. We have 24/7 helpline and service on demand.

Our ERP software solutions (SMEBS) has been designed for organizations that seek seamless integration and management of diverse organizational functions on a single platform with the objective of reducing total cost of ownership and to overcome the business challenges in cost-effective manner, which leverage your organization by making a central management hub within the organization for efficient administration of all organizational work flow processes and help your organization to overcome operational, management and performance challenges in cost-effective manner by fully eliminating application running and maintenance costs

SMEBS is Cloud enabled ERP System which provides you seamless integration across enterprise, whereby you can connect all different Organizational Units, its branches and departments irrespective of their different geographic locations and time zones on multi-currency and multi-company operating environment on a single platform

It gives bull's eye view of critical business indicators to help stakeholders take right decisions at right time and ensure that all business operations run smoothly with powerful authorization engine which gives you fool proof access control allowing authorized users to see complete picture of what's happening in your company or group of companies, from any access point

Introduction To SMEBS

With the opening up of the Indian economy, there has been a phenomenal growth of the mid market companies. These have in the industrial segments like Services, Utilities, Software, Trading, Manufacturing, Pharmaceuticals and Projects etc. Associated with this is rising competition and the need to continuously provide and increase value added services to attract an ever increasing customer base. Improving efficiency and speed of operations, cost optimization, improve manpower utilization, faster access to market trends, need for readily available business intelligence have compelled organizations to adopt processes and solutions that will help sustain their competitive advantage.

Relying on internal manual processes have been a serious handicap and more and more organizations have felt the need and are embarking on investing in automation and process enablers. It is also felt that speed of implementing such process enablers, and having tangible returns on investment, is the key to success in the medium term. In today's dynamic business environment companies can no longer function without an effective IT system

Information Technology frameworks in the name of ERP like SMEBS have been the key solution to address these requirements and an ever increasing number of companies in the mid market have already invested in ERP or are in the process of doing so.

Business benefits aside, ERP gives an information system three important capabilities: consistency and reliability of data across the organization, streamlined transaction processing, and provides operations level reporting. These capabilities, basic and important as they are, ensure that companies are ready for specific solutions that enhance performance.

SMEBS an ERP software solutions from Shanshin Softech is the right solution for all your enterprise needs, because it takes the full power of ERP and places it on the cloud. Therefore, you can operate it easily on the Internet. Unlike other solutions in the market, Our ERP helps you manage all important processes using one integrated solution.

The ERP functionality in SMEBS is designed to meet the needs of growing companies. The software includes comprehensive features to manage all facets of your business. It delivers role-based access to business application data and analytical tools.

SMEBS provide a centralized framework for all data and processes of an organization. It integrates all aspects of a business from planning to inventory control, manufacturing, sales, marketing, finance, customer service and human resources.

A significant part of our services portfolio is our customized ERP solutions. At Shanshin, we provide cost effective enterprise solutions that are developed and customized keeping in mind the individual requirements of clients and their areas of operation. Our process experts will evaluate every detail and thoroughly assess each option that they draw for your organization.

Our enterprise solutions enable the integration of all business activities of an organization thereby improving operational efficiency.

SMEBS superior in ERP system through low pricing and having full range of business functions is a simple integrated and affordable Business solution system. Our goal is to exceed the expectations of every client by offering outstanding customer service, increased flexibility, and greater value, thus optimizing system functionality and improving operation efficiency. We are distinguished by our functional and technical expertise at NIT Calicut combined with our hands-on experience, thereby ensuring that our clients receive the most effective and professional service. We are involved in every stage upon client selection of ERP software from implementation to completion offering continual functional and technical support. Our extensive skills encompass all aspects of implementation and operation, including business requirements definition, development of functional specifications for client approval, system design, and overseeing development teams customizing software to fit specific client needs. Typically, we are on-site at the Client's locations handling client contact, providing functional and technical training and support, and resolving any and all troubleshooting issues that arise when the client initiates software usage in a live setting

Features

- ✓ On Demand Infrastructure and Software as a Service.
- ✓ Inherent Multi-Tenancy and Security
- ✓ Complete Channel Management Functionality
- ✓ Secure Network Segregation and Policy Management
- ✓ Dedicated Virtual Appliances
- ✓ Comprehensive Customer and User Audit Logs
- ✓ Complete IT Infrastructure Self Provisioning (Network and Server)
- ✓ Deploy/Manage Virtual IT Infrastructure from Anywhere, Anytime
- ✓ Virtual Private Datacenter Services and dedicated servers along with all software solutions needed for your business to run and grow is at Your Fingertips

Shanshin's 24×7 Support Included

How It Works:

SMEBS is a revolutionary Enterprise Resources and Planning solution with IaaS and SaaS platform designed for and sold exclusively to Business Establishments which recognizes the differences. It is specifically for those who recognize the benefits and efficiencies that come with SMEBS enabling their offerings but do not want to spend the large amounts of capital that is required to setup their own costly Infrastructures and buy costly ERP solution

Work Smarter, Not Harder:

With SMEBS you are able to manage and administer your IT infrastructure the same way you do today. Only, now you can do it much more efficiently and in a fraction of the time. Say goodbye to the days of constantly traveling to your branches and customer's locations for every little problem that comes to the surface. Instead, manage your branches's entire infrastructure from one unified management console.

Don't Change The Way You Manage Your Business Today:

One of the many issues surrounding the implementation of ERP solutions provided by major ERP providers today is that you need to completely change your current business model and confuse your employees and customers by changing the way that you charge for services. In the case of SMEBS, this is completely untrue. In fact, we encourage you to continue doing business as you do today. The only difference being that, thanks to SMEBS, you are now able to increase your bottom line by eliminating much of the everyday expenses and time consuming manual tasks associated with managing separate physical IT infrastructures and Software solutions.

How SMEBS Compares to On-premise ERP

If you're considering an ERP System Or any IT Solution for your business, chances are you're being bombarded with choices. As you consider your options, one of the most important decisions you'll need to make is whether to select Shanshin's ERP solution or one that's installed locally.

The basic difference between on-premise ERP or Local IT Solutions and SMEBS is clear: On-premise ERP or Local IT solutions are installed locally on your company's hardware and servers and then managed by your IT staff while SMEBS is provided as a service. With this type of deployment, a company's ERP software and its associated data managed centrally (in the Internet "cloud") by us and are accessed by customers using a Web Browser.

What may not be so clear is that the type of ERP deployment model you choose can have a significant impact across your business. Here are some key factors that you need to consider when weighing whether to use on-premise or SMEBS.

Ownership Costs

On-premise ERP systems usually require large upfront and ongoing investments to purchase and manage the software and the related hardware, servers, and facilities necessary to run it. If your company doesn't have a large or experienced IT staff, you may also have to invest more time and money in additional personnel and train them. Even more importantly, on-premise systems require that your IT team spend a significant amount of their time and budgets ensuring your system is up-and-running when you need it, including maintenance of hardware, server rooms, UPS, air condition and more. When its time for your ERP system to be upgraded, IT staff must then redeploy the system across the various users' computers and re-implement various customizations and integrations that your business installed on your previous software.

For SMEBS, initial costs are typically much lower because you simply implement the software to your requirements and then access it through your computer's internet connection. SMEBS maintains all of the IT infrastructure for you, ensures the system is always running, that the data is secure, and that product enhancements are rolled out painlessly to your solution without breaking your previously implemented customizations. Ultimately, this all allows your IT resources to focus on innovating and helping grow the business more effectively, rather than spending a disproportionate amount of their time on maintaining and managing your on-premise systems.

System Upgrades and Enhancements

On-site ERP software can be customized, but those customizations are tied to your current software deployment and are not easy to re-implement with future versions. As your ERP provider releases new product updates and enhancements, your previously implemented customizations will be wiped out when you upgrade and your IT team will have to start customizing from scratch again. That's the main reason many companies simply avoid upgrading their on-site ERP software and just settle for running their business on out-of-date technology. In fact, two-thirds of mid-size businesses are running outdated versions of their ERP software.

In contrast, SMEBS is continually upgraded by us so you can be sure you're always using the latest and most advanced version of your ERP software. Hence your previously implemented customizations and integrations automatically carry forward when the solution is updated without additional investment.

Improved System Performance and Accessibility

SMEBS delivers better performance than on-premise solutions. SMEBS software architecture is designed from the ground up for maximum network performance, which can mean better application availability than traditional on-site ERP systems.

It's also important to note that SMEBS provides real-time data that can be accessed via the Internet anywhere at any time. That means that staff at your company can see accurate information on laptops, smart phones, and tablet devices while they travel or telecommute—all without extra setup fees or ongoing costs.

Deployment Speed

Every ERP deployment takes time and requires careful planning, but SMEBS offers clear advantages when you consider speed of deployment. Since SMEBS requires no additional hardware, your business doesn't have to waste time procuring and installing IT infrastructure. With SMEBS, you can easily roll it out across multiple regions, subsidiaries, and divisions, avoiding the cost associated with those rollouts. If you chose SMEBS, these differences can add up to a significant time savings. SMEBS deployments usually take 1-2 months compared to the 12 months that it typically takes to implement an on-premise solution.

SMEBS is also easier to scale, giving you the flexibility to add more users as your business grows. On-site ERP solutions don't offer the same freedom—to give more employees access to an on-site system, it's often necessary to provision additional hardware.

Every business is unique, so taking the time to consider how different ERP deployment options will affect your company is critical.

The screenshot shows a web browser window with the address bar displaying 'http://www.shanshinsoftech.com/'. The browser's address bar also shows 'http://www.shanshinsoftech.com/'. The website content includes a header with 'Shanshin Softech (Shanshin Softech East Resource Solutions)', a navigation menu, and a main section with logos for Shanshin Softech, Calicut Ayurveda, and Kerala IT. Below these are links to Financial Management, Inventory Management, Human Resource Management, Project Management, and Student Management. A large image of a building is also visible.

4. The system can be remotely supported in the client's server. Hence no need of walking to the client's location which will considerably reduce the cost of support.
5. No need of installing client part of software and configuring any user system to access the ERP. Thereby user can use any machine with a connection to the server to manage the business from anywhere in the world with high security.
6. Totally eliminates the cost of setting up Infrastructure, Maintenance, Risk after expiry of all costly machines and accessories.



mobile utilities.

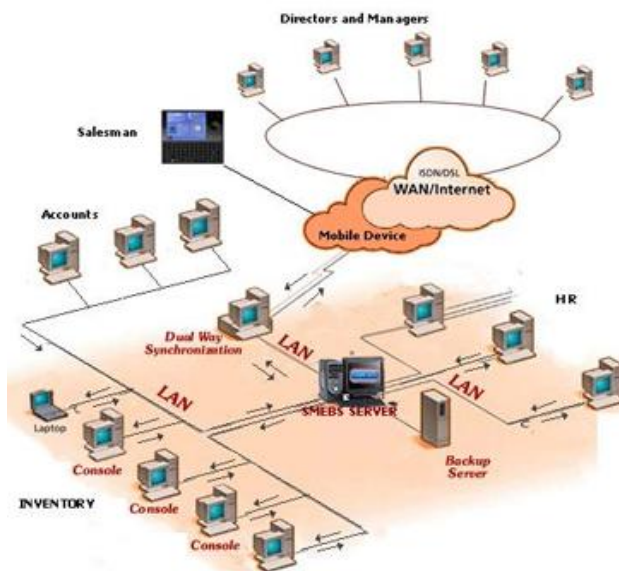
7. Totally eliminates the cost of VPN/MPLS network connections
8. Totally eliminates the cost of highly skilled human resources required to maintain the entire scenario of the IT Infrastructure.
9. SMEBS extends the support to access the application on windows mobile devices and mobile phones so that to update customer orders from the customer's location itself and other



Overview

SMEBS is an enterprise resource planning (ERP) system that integrates and automate many of the business practices associated with the operations or production aspects of a company, serving both the domestic and international sectors to help the companies of any size for achieving their defined business goals effectively. These typically include and can aid in the control of many business activities, like Financial Management, Inventory Control, Payroll and Human Resources Management for a Business Organization/Company of any size. It will differentiate itself from its competitors (generally larger firms) through lower pricing, enabling existing levels of business process without a need of changing the business process to accommodate the technology integration and many other attractive features.

SMEBS provides an integrated information system for the management of Middle East Business with bi-lingual support (Arabic-English) and Multinational Business with Multi lingual support (Indian and German Languages).



SMEBS serves all warehouses and departments within an enterprise to integrate data captured at all different stages thus optimizing processes and providing managers a clear and complete perspective on their business across national, currency, and organizational boundaries. The benefit is that organizations streamline their operations and perform activities that add value efficiently and effectively.

It is further designed to help the companies determine best practices across multiple sites, with solutions that allow organizational structures to be flexible in response to local requirements. Because of the applications' underlying architecture, the application can be configured and modified on

an on-going basis.

SMEBS is an intelligent front end application for any advanced database server like Oracle (Ver. 8 to 11g), SQL Server and Microsoft Access depend upon the requirement of the user. The back end database can be accessed without installing the client part of the database in the user machines and any number of concurrent users can be created to access the application besides having the features to create unlimited users to access each modules.

SMEBS can be used as a standalone application, on Local/Wide Area Network or on Intranet/Internet (Web) environment in a single installation. Thus an enterprise having number of warehouses, companies across the world can use the same application to bring the business management in a single integrated environment, housed with their own database and network and can all fit under one umbrella.

SMEBS can manage any size of business ranging from medium level to the largest business organization/Company within the Republic and the Middle East.

SMEBS has a very advanced security of information and operation. It protects managerial

information and restricts user rights from different users as controlled by the system administrator.

In today's global economy, Business Executives must make decisions in real-time. Whether they are travelling or staying at home, the Web-based Business Solution of SMEBS will deliver complete business information on demand with just a click Everything is ONLINE, Everything is INTEGRATED and Highly Affordable

See how SMEBS streamlines financial processes

SMEBS is the world's most deployed cloud ERP solution. It provides proven financial, Inventory, HR and Payroll managements Systems and ERP that easily integrates with your broader sales and service processes.

SMEBS takes your business beyond traditional accounting software, streamlining back-office processes and equips you with the visibility you need to make better faster decisions.

Key Benefits

- **Accelerates the order-to cash process by 50%+**
- **Slashes the financial close** with real-time reporting
- **Strengthens procurement** with approvals and vendor management
- **Improves employee management** through self-service
- **Drives decision making** with personalized dashboards
- **Improves accountability and compliance** with strong traceability
- **Reduces IT costs and delivers automated ERP upgrades**
- **Elevates productivity** with anytime, anywhere access

Modules

Financial Management System

Shanshin Financial Management System is an intelligent System in Accounting, Finance and Management which performs all the tasks commonly associated with recording and reporting all financial transactions for any company. It is fully an integrated System comprising of the five sub-systems: Fixed Assets Register, General Ledger, Accounts Receivable, Accounts Payable and Service Invoicing. The system help drive company performance by efficiently handling a multitude of daily transactions, sharing valuable information hidden in transactional data, and adapting processes fluidly as business conditions and regulatory environments change. The system enables companies to integrate and streamline local and multinational financial resource management processes from end to end. By doing so, they achieve a reliable, apples-to-apples view of financial performance across the entire enterprise, as well as the flexibility and control necessary for adapting to the demands of even the most challenging business environment

Inventory Management System

Shanshin Inventory Management System is designed for any business that desires a complete control over stock levels and inventory tracking. It is a multi company, multi warehouse system that may be used as a standalone system, or as a part of the total Shanshin Business Solution, covering all aspects of the control of inventory management from receipts to issues including real time multi site views of current and expected stock. It is designed to integrate all your external and internal functional areas in a process based environment to ensure a seamless link for all transactions between suppliers, customers and across different Warehouses of a company. In an integrated environment, the Inventory Management module will update the financial records as appropriate through special posting routines designed for this purpose.

Human Resources & Payroll Management System

Shanshin Human Resources Management System is a multi company, multi cost centre, multi division system, which significantly reduces the amount of time that your human resources department spends managing employee information. Easily create reports in an instant that showcase your staff's competencies. Manage employee benefits; produce and customize cost saving reports from a central database. The system may be used as a standalone system, or as a part of the total Shanshin Business Solution. The Payroll sub-system is integrated with the Human Resources management system processes payroll faster and produces reports immediately with the ability to analyze payroll and deduction allocations by any parameter and will handle weekly payroll as well as monthly payroll. In an integrated environment, the Payroll Management System module will update the financial records as appropriate through special posting routines designed for this purpose

Modules In Details

Salient Features of Shanshin Financial Management System

Fixed Assets Register

- Categorise Fixed assets into user defined groups
- Methods to incorporate depreciation for each group of assets
- Maintenance of fixed assets register. Information recorded for each asset includes Description, Model, Part Number, Serial Number, Registration Number (or plate number in case of vehicles), Supplier, Date of Purchase, Method of Purchase and Next Service Date. The System will also display Total Cost, Depreciation to Date and Net Book Value
- Depreciation Rate may be set for a Group or individual assets
- Complete Audit Trail
- Automatic creation of Fixed Asset record from source document (while posting in the General Ledger or Accounts Payable)
- Option to “add” to an existing asset
- Automatic Depreciation Journal (on request)
- Automatic Transfer of Assets Journal – the user will identify the assets to be transferred to the “New Location”
- Automatic Scrapping of Assets Journal – the user will identify the assets to be scrapped
- Sales of Fixed Assets - Cash or Credit – through the General Ledger & Account Receivables posting routines
- Fixed Assets maintenance costs recording and tracking
- Fixed Assets maintenance costs recording and tracking
- Comprehensive reports including Fixed Assets Register, Sold/ Scrapped Assets Report, Audit Trail & Fixed Assets Summary Report with user-selected sort options

General (Nominal) Ledger

- Cost Centre accounting
- User-defined Account Groups
- Multi currency
- Interlinked Trial Balance, Account and Document Enquiry routines
- Budgeting (current year as well as next year)
- Batch and On line posting
- Automatic reversals of “Accruals” and “Prepayments” journals

- Standard journals
- Automatic revaluation of foreign currency accounts
- Cash and Bank reconciliation
- Complete audit trail of transactions logged with user id and date of entry
- Option to keep “Last Year” open items posted into last year’s accounts are automatically reflected in this year’s opening balances
- Enquiry and reporting on previous years’ data
- User-defined Financial Statements (Profit & Loss Statements and Balance Sheet)
- Multiple sort options for reports

Accounts Receivable (Sales Ledger)

- Open item ledger
- User-defined Customer Groups
- Customers Addresses, Contact Details, Credit Limit & Turnover
- On line ageing of balances
- Multi currency transactions
- Comprehensive reports including Customers List, Turnover Report, Customer Account History, Aged List of Debtors with user-selected sort options (by Customer Account, Customer Name, Customer Group etc)
- Customer Statements
- Provision to view reports on screen, output to file (which may then be viewed, printed or exported) as well as to printer.
- Remittance Advice

Accounts Payable (Purchase Ledger)

- Open item ledger
- User-defined Supplier Groups
- Suppliers Addresses, Contact Details, Credit
- On line ageing of balances
- Multi currency transactions
- Comprehensive reports including Suppliers List, Turnover Report, Supplier Account History, Aged List of Creditors, Payment Schedule with user-selected sort options (by Supplier Account, Supplier Name, Supplier Group etc)

Service Invoicing

- On line preparation of Service Invoices (including Sales of Fixed Assets)
- On line preparation of Credit Notes
- On line preparation of Receipt Vouchers
- On line preparation of Payment Vouchers
- Comprehensive reports including Invoices Report, Credit Notes Report, Receipt Vouchers Report & Payment Vouchers Report

Salient Features Human Resources Management System

Master Record

The Employee Master Record contains information such as Employee Name, Cost Center, Division, Job Title, Salary Grade, Local & Home Addresses & Contact Numbers, Date of Birth, Nationality, Religion, Qualifications, Next of Kin, Sponsor, Arrival Date, Date of Joining, End of Probation Date, Contract Dates, Annual Travel Tickets & Leave entitlements etc.

Salary Record

The Salary Record contains details of the employee's remuneration the employee's salary may be specified in foreign or local currency according to contract. Method of Payment may be specified as Cash, Cheque, Bank Transfer or Other. For employees paid by Bank Transfer, details of the employee's bank account are also recorded here. The System will automatically calculate Employee & Employer GOSI contributions.

Documents

The System handles any number of user-defined document types (for example Passport, Health Card, Driving License etc). For each of these document types, the user may specify, for each employee, Document Number, Place of Issue, Date of Issue and Expiry Date. The System can also reference, display and print pre-scanned images of documents

Dependants:

An employee may have an unlimited number of dependants. For each dependant, the user may specify the Dependant Name, Relationship with Employee, Date of Birth, Nationality and Religion. Dependants' documents may also be entered and processed.

Leave:

Leave Dates, Return Dates, Flight Details & Tickets may also be recorded. The System will also allow recording of dependants' travel details if the company is responsible for the travel expenses.

Medical History:

Dates, details and costs thereof may also be recorded and reported

Disciplinary Records:

Dates and details thereof may also be recorded and reported.

Assessment Records:

Dates and details thereof may also be recorded and reported. Contracts of employment may also be renewed here.

Uniform Issues:

Dates, Uniform Type, Color & Size are also recorded. The System will produce a report listing items "to be issued" within a user-specified range of dates.

Items In Employee's Custody

A record may be kept of all items issued to employees together with issue dates and return dates this may also be linked to Fixed Assets.

Employee Transfers

The System keeps a log of Cost Center, Division, Job Title and Salary Grade changes for each employee.

Salary Changes

The System keeps a log of all salary revisions for each employee.

Photo

The System can also reference and display pre-scanned photographs.

Application Forms

The System will print application forms for Issue of Iqama, Travel Visa, Transfer of Sponsorship, Addition of Dependant and Travel Permit as required by the Ministry of Interior.

Reports

The System will provide a comprehensive range of reports including Prime Database Report, Document Renewals Report, Dependants Report, Leave Report, Leave Schedule, Medical History, Disciplinary Report, Assessments Report, Employee Transfers Audit and Salary Changes Audit. All reports offer the user a wide range of selections and sort options, with the provision to view reports on screen, output to file (which may then be viewed, printed or exported) as well as to printer.

Payroll Management

Employee Loans

Details of employee loans such as Date of Loan, Payment Voucher Reference, Loan Amount, Rate Per Month, Settled to Date & Balance Outstanding. An employee may have more than one loan at any given time. Loan repayment amounts are automatically deducted in the payroll process, and the respective loan records are automatically updated.

Payroll Transactions

For a given payroll period, the user may record transactions such as Normal Overtime, Holiday Overtime, Commissions, Bonuses, Fines, Absenteeism, and Advance Payments etc. The user may also record “Other Deductibles” such as personal telephone calls made by the employee, and “Charge Out” transactions to charge part of an employee’s cost to a different cost center or project.

Advance Payments

The System will automatically calculate Advance Payments for employees going on leave. If utilized, this routine will automatically update the “Leave Tables”, and automatically post a “transaction” in the “Payroll Transactions Table”.

Terminations, Resignations & Ending Contracts

The System will automatically calculate the End Of Service Award and Terminal Pay (final settlement) for employees leaving the company. Here, balances on outstanding loans are recovered.

Reports

The System will provide a comprehensive range of reports including Loans Report, Payroll Transactions Audit, Payroll Check List, Cost Center Summary, Currency Denomination (for employees paid in cash), Overtime Report and Year to Date Report. All reports offer the user a wide range of selections and sort options, with the provision to view reports on screen, output to file (which may then be viewed, printed or exported) as well as to printer.

Pay Slips

The System will print a Pay Slip for each employee.

Posting Payroll

The System will update the Year to Date figures, Employee Loans Records and print the Payroll Journal. If linked with Shanshin Financial Management, the System will also post the Payroll Journal to accounts.

Archiving: At the end of the financial year, the System will automatically archive “last year’s” data, and bring forward all the current employees’ data to the New Year. The archived data may be viewed and reported at any time.

Other Routines

The System will produce an “End of Service Award”, and “Holiday Pay Reserve” reports. The System also includes a special routine for re-calculation of GOSI contributions at the start of each financial year.

Salient Features Shanshin Inventory Management System

Stock Control

- Choice of Method of Costing: Weighted Average, Standard Costing, LIFO or FIFO
- Multiple Product Groups
- 8 digit alpha numeric Stock Numbers and 25 digit alpha numeric (user-formatted) Part Numbers
- Products Catalogue – common to all warehouses and shops
- Bar codes
- Individual records for different warehouses and shops
- Colours and sizes, Lot Numbers and Expiry Dates and Serial Numbers options
- Enquiry routines by stock item by warehouse or shop, which will display details of Holding, Stock Orders (by supplier by order), Consignment Stock (by customer by order), Customer Orders (by customer by order), Customer Reservations (by customer by order) and Sales History
- Enquiry routines on warehouse or shop stock position as well as global holding per stock item
- 24 period on line Sales History per stock item per warehouse or shop

- Year to Date Opening Balance, Receipts Year to Date and Issues Year to Date per stock item per warehouse or shop
- Complete record of transactions per stock item per warehouse or shop
- Automatic pricing routine which will recalculate the selling price for individual stock items as: A percentage of current selling price, a percentage mark-up on average cost or a percentage mark-up on latest cost
- Stock Holding reports by quantity, value, months in stock and non-moving stock.

Stock Adjustments

A suite of programs for Stock Taking, complete with printing of Stock Take Sheets, Entry of Stock Take Results (by bin location), Discrepancy Report and Posting.

Purchasing

- Optional automatic Purchase Order Generation routine
- Recording of manually generated Purchase Orders and modification of automatically generated orders
- Printing of Purchase Orders
- Purchase Order Status Reports
- Stock Receipts – these may be full or partial against Purchase Orders, or may be local purchases
- Stores Receipt Vouchers and Binning Reports (for arranging items in warehouses and shops)
- Returns to Suppliers
- Stock Returns Reports

Customer Order Processing

- Customer Records- Customers may be Cash or Credit
- Customer Discount Matrix by Customer/ Product Group. Selling Prices may be calculated as Cost Plus or Retail Minus for individual customers for individual product groups
- Customer Orders
- Customer Reservations (including expiry dates)
- Customer Deposits against orders and/or reservations the System will print Receipt Vouchers
- Cash Refunds against Customer Deposits the System will print Payment Vouchers

Stock Issues

- Issues to Projects or Contracts – complete with reports and picking slips
- Internal Issues (to Fixed Assets, Expense Accounts etc) – complete with reports and picking slips
- Consignment Stock Issues – complete with reports and picking slips
- Stock Transfers and Receipt of transferred stock – complete with reports and picking slips
- Issues of Raw Material to Production and Receipts of Finished Goods – complete with reports and picking slips
- Issues to Workshop against Job Cards – complete with reports, and picking slips

Sales

- User-defined Sale Types with corresponding Sales Accounts for detailed analysis in Profit & Loss Statements (if linked with Financial Management System)
- Quotations
- Pro-forma Invoices
- Invoices – Invoices may be raised against Quotations, Pro-forma Invoices, Customer Orders, Customer Reservations and Consignment Stock Issues. Invoices may be Cash or Credit. For Cash Invoices, payment may be in cash or charged to Credit Cards.
- Credit Notes and Refunds
- Non-stock items
- Summary and detail reports on Quotations, Pro-forma Invoices, Invoices and Credit Notes by Document Number and Customer Number. Detail reports may also be printed by Stock Item.

Warranty

For items requiring warranty (or guarantee) details, the System will automatically create a Warranty Record and “fill in the blanks” upon producing the invoice. The System will also print a Warranty Report.

Others

- Total integration with Shanshin Financial Management System
- User-specified Accounts Interface Tables
- Provision to view reports on screen, output to file (which may then be viewed, printed or exported) as well as to printer.

SMEBS AT THE SERVICE OF MANAGEMENT

Information Systems have played an increasingly visible role over the past several years in improving the competitiveness of business. More than just tools for handling repetitive tasks, they are used to guide and advance all of a company's daily activities. Integrated management software is today very often a key source of significant competitive advantage.

The standard response to a need for responsiveness, reliability, and rapidly increasing expectations is to create an organization based on departments with a clear linear structure, integrated around your operating processes. To increase efficiency amongst salespeople, accountants, logistics staff and everyone else you should have a common understanding of your problems.

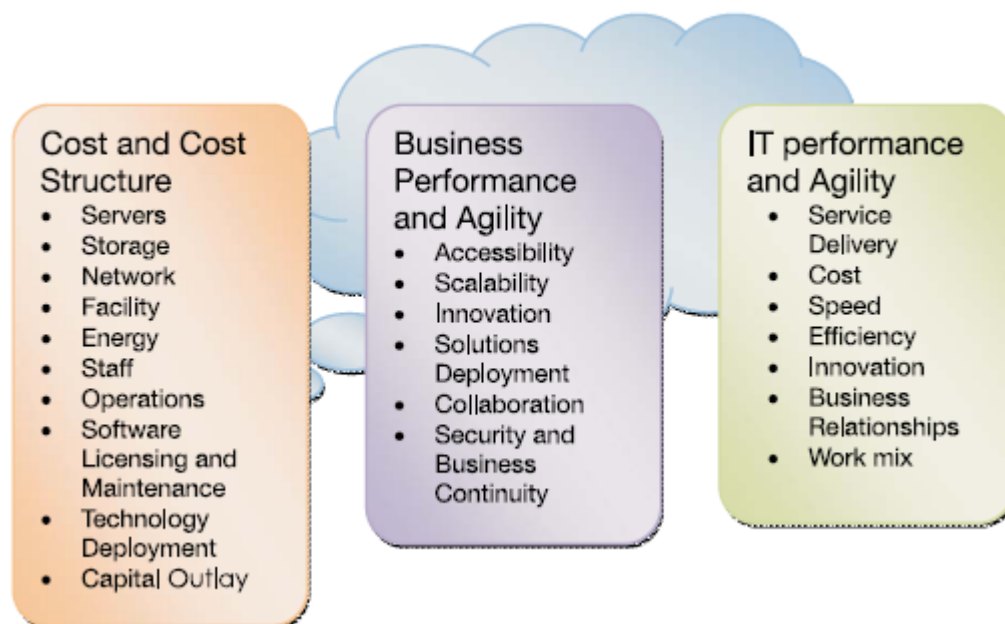
For this you need a common language for shared references, policies and communication. An ERP (Enterprise Resource Planning) system provides the ideal platform for this common reference point.

Risks and integration costs are important barriers to all the advantages you gain from such systems. That is

why, today, few small- and medium-sized companies use ERP. In addition, the larger ERP vendors such as SAP, Microsoft and Oracle have not been able to reconcile the power and comprehensive cover of an ERP system with the simplicity and flexibility wanted by the users. But this is exactly what small and medium enterprises are looking for.

The availability of SMEBS in cloud environment, and the new online delivery methods adopted by its developers, provides a new way of resolving such cost and quality issues for this kind of enterprise software. To make ERP system fully available to small and medium enterprises, cost reduction is the first priority. SMEBS makes it possible to greatly reduce the Total Costs Ownership (TCO) of the implementation of ERP

The cloud integration of SMEBS offers an opportunity to a business enterprise to create a virtualized IT architecture on its own terms with the internet as a backbone for facilitation. The applications reside on the hardware of CtrlS datacenter, within its network along with the data. The IT infrastructure is distributed across the enterprise through the internet



Cloud Integration of SMEBS for Multiple Companies & Allied Business Establishments

SMEBS is the ideal ERP platform for the management of the entire business activities of multiple companies of single owner or business groups. A single installation of the ERP on a centralised server in the cloud environment can manage the business activities of all the companies/establishments such as Manufacturing, Trading, Hospitals, Education Institutions and other Business Establishments owned by a single entity.

The application and database can be hosted at a Data Centre in a cloud environment provided by CtrlS Hyderabad. You need not to have any botheration for setting up server rooms, LAN/WAN and employing engineers to manage the entire scenario of the IT infrastructure. This will reduce 75% of your Total Cost of Ownership (TCO) by making use of emerging technologies like SAAS, Green Data centers, Cloud Computing, Grid Computing and Nuclear proof data center.

This includes not only direct cost reduction, but also cost avoidance and improving cost structure. Through

Consolidation of hardware and virtualization of the digital assets, you can reduce your short term costs. This leads to an overall reduction of 40% in data center costs, including a 30 percent reduction in power consumption and cooling costs. Virtualization enables organizations to resize the data center closer to average capacity. Accordingly when the need arises, resources can be automatically channeled to the most important business activities. By pooling and centrally managing assets, SMEBS delivers economies of scale, better resource utilization, reductions in capital outlay, ongoing operational efficiencies, and the conversion of fixed costs to variable.

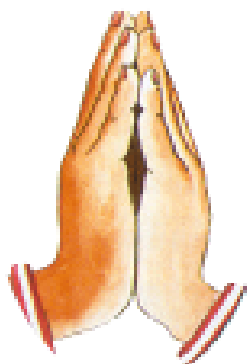
SMEBS can enable all technology dependent business processes of an organization to operate more efficiently, with faster cycle time and at a lower cost

Benefits include:

- Expanded access to information and applications
- Rapid scaling of business operations up and down
- Rapid business innovation
- Rapid deployment of new business capabilities
- Expanded coordination and collaboration
- Better compliance, security, and continuity

SMEBS offers you a very convenient management of your entire business by sitting at any corner of the world with internet connectivity. You can expand your business around the world without having additional investment for making new IT infrastructure. New changes and additional requirements can be added on the server remotely.

SHANSHIN SOFTECH



Copy Right Shanshin Softech

SHANSHIN SOFTECH

Shanshin Softech
National Institute of Technology
NIT Campus P.O
Calicut, Kerala-673601, India
Phone: 0091 495 2520894
Mobile: 0091 9846763389

- ceo@shanshin.com
- admin@shanshin.com
- info@shanshin.com
- ceo@shanshin.net
- ceo@shanshin.org

<http://www.shanshin.com>



<http://www.shanshin.net>

<http://www.shanshin.com/connect>